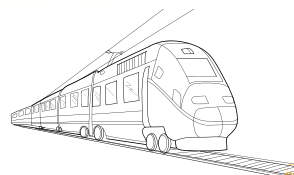


Draw your own Green Superhero

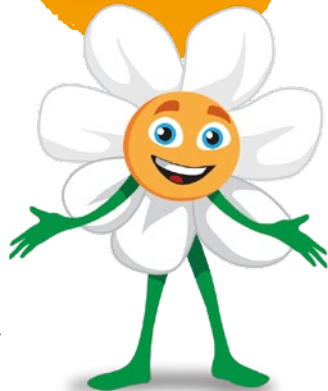


Travelling by train is **greener than travelling by petrol or diesel car** – it's safe and means cleaner air to breathe.

Daffnee FACTS

Trains can run on electricity made from **solar or wind power** – and they can recharge their batteries when they slow down!

Using **e-tickets** saves miles and miles of paper every year.



Carbon used to make all the plastic bottles each year in the UK could take you round the world by train **1,750 times!**

Need to park your bike? There are **80,000 bike racks** at railway stations in the UK.

Travelling on one train can take up to **500 cars off the roads** – that's a lot of **carbon!**

Travel with the **GREEN TEAM**

with Daffnee Green



Colour me in!



Going shopping..? **Take the Train!**

Reduce carbon emissions... **Go by Train!**



Spot ten things that protect our planet and wildlife



Let's look after our planet!

Daffnee's challenge

Daffnee wants you to find out these things to help you protect the environment:



- ▶ Find out the name of your nearest railway station.
- ▶ Name three plants and three animals that might live near your house.
- ▶ Find out the colour of your recycling bin and the day it's collected.
- ▶ The next time you go out with your family, think about taking the train.

Daffnee asks:

- ▶ Which is best for the planet — travelling by diesel car or electric train?
- ▶ What could you do to encourage wildlife to live near your house?
- ▶ Name three places you could travel to by train.
- ▶ Name the mucky stuff in smoky emissions which is bad for the planet.
- ▶ What do you use every day that can be recycled?



What's your carbon footprint?

wwf | FOOTPRINT CALCULATOR

Scan the QR code to find out how much of an impact you have on the environment, and set yourself a challenge to reduce it.